

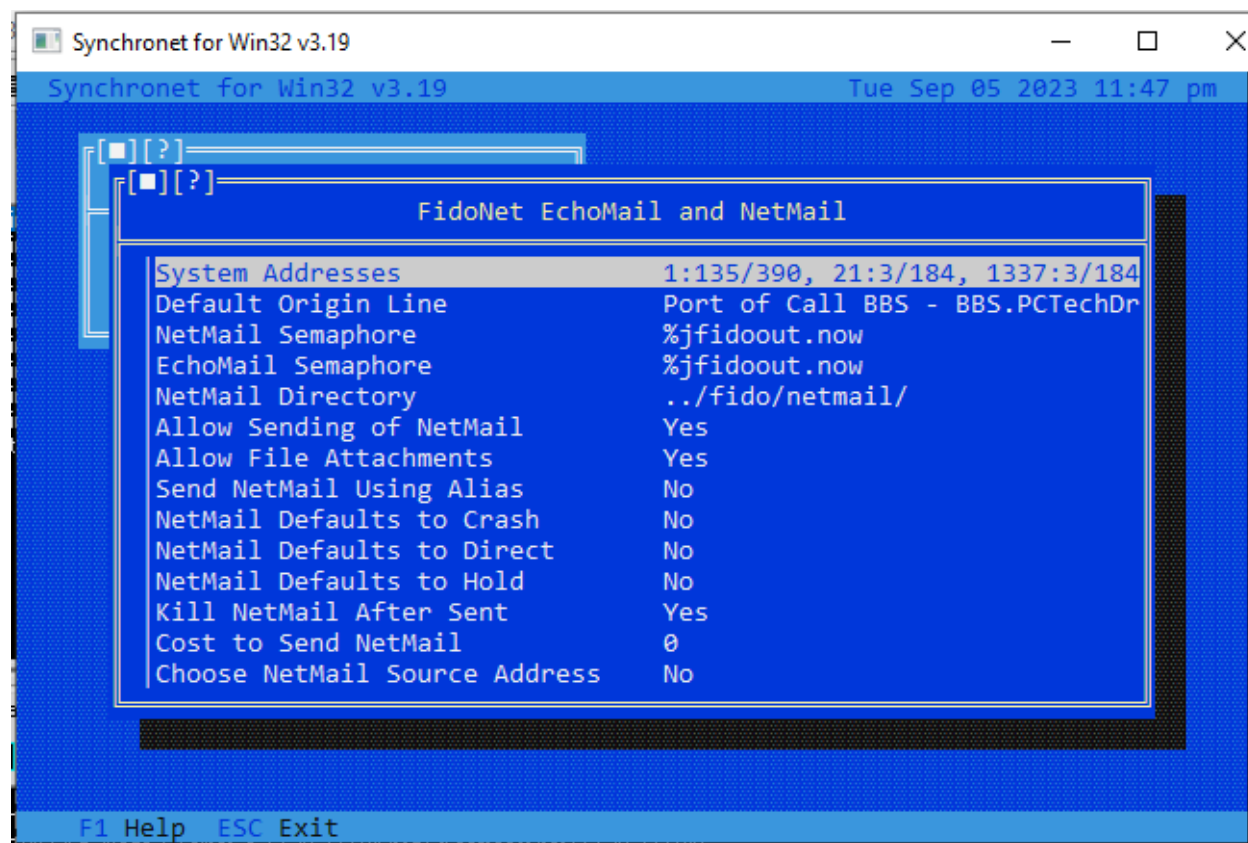
# SynchroNet TQWNet Config

By: Dave Weissinger  
Port of Call BBS  
BBS.PCTechDr.com Port:2323  
<https://BBS.PCTechDr.xyz>

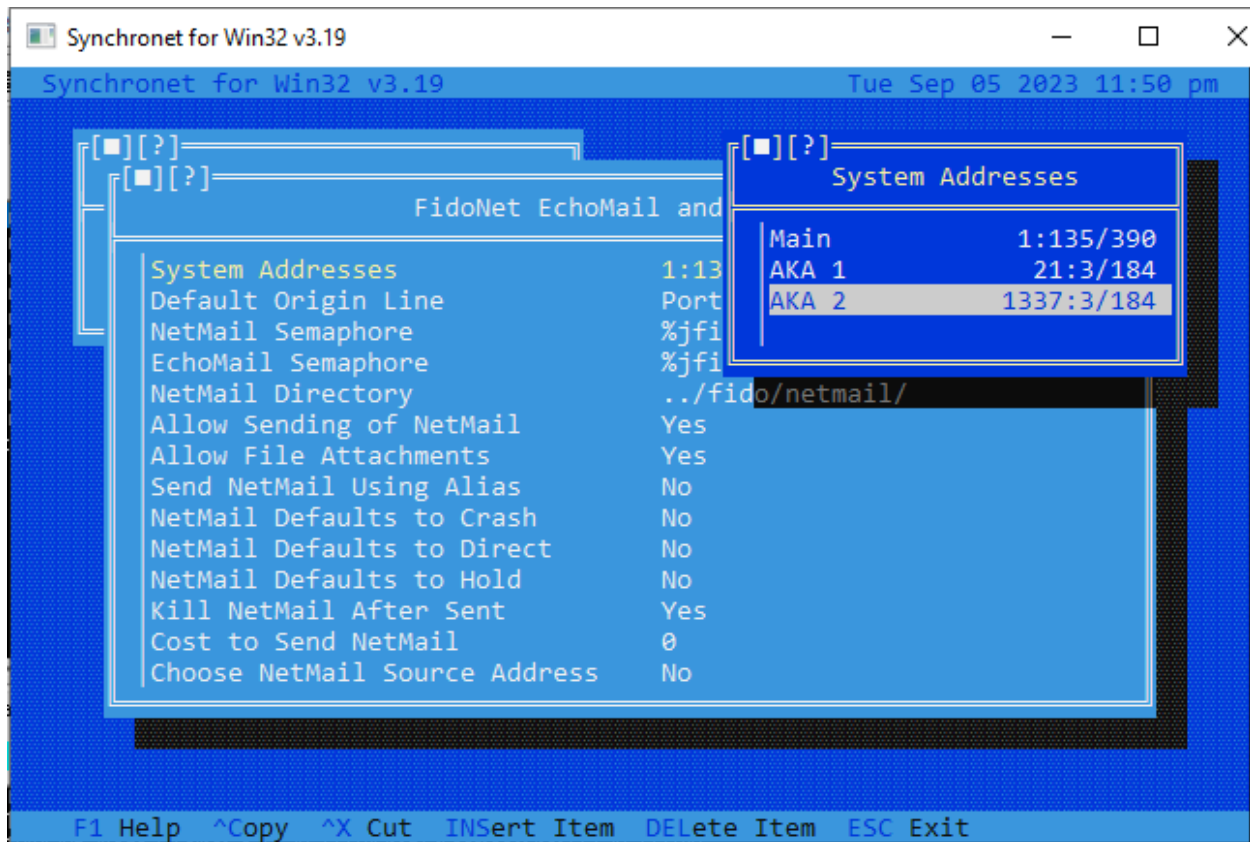
This document can be used as a guide to configure TQWNet on a BBS running SynchroNet BBS. This process was completed on SynchroNet BBS 3.19b and the process may change over time. The two main areas that will be configured are the main BBS config and the echocfg areas. This is meant as a general guide to help others and there may be better ways to complete these steps, but these are the steps I took to get my SynchroNet BBS working on TQWNet.

This document assumes that you have already received your node and hub information. There will be screenshots throughout this process to assist you in understanding the configuration. From my experience, this process can work for FSXNet and possibly other networks.

The first step would be to add your node to your Network area in your main config. You can access that from the main SynchroNet control panel and clicking on "BBS" and then "Configure". After the BBS configuration area opens, Click on "Networks" and then "FidoNet, Echomail and Netmail".

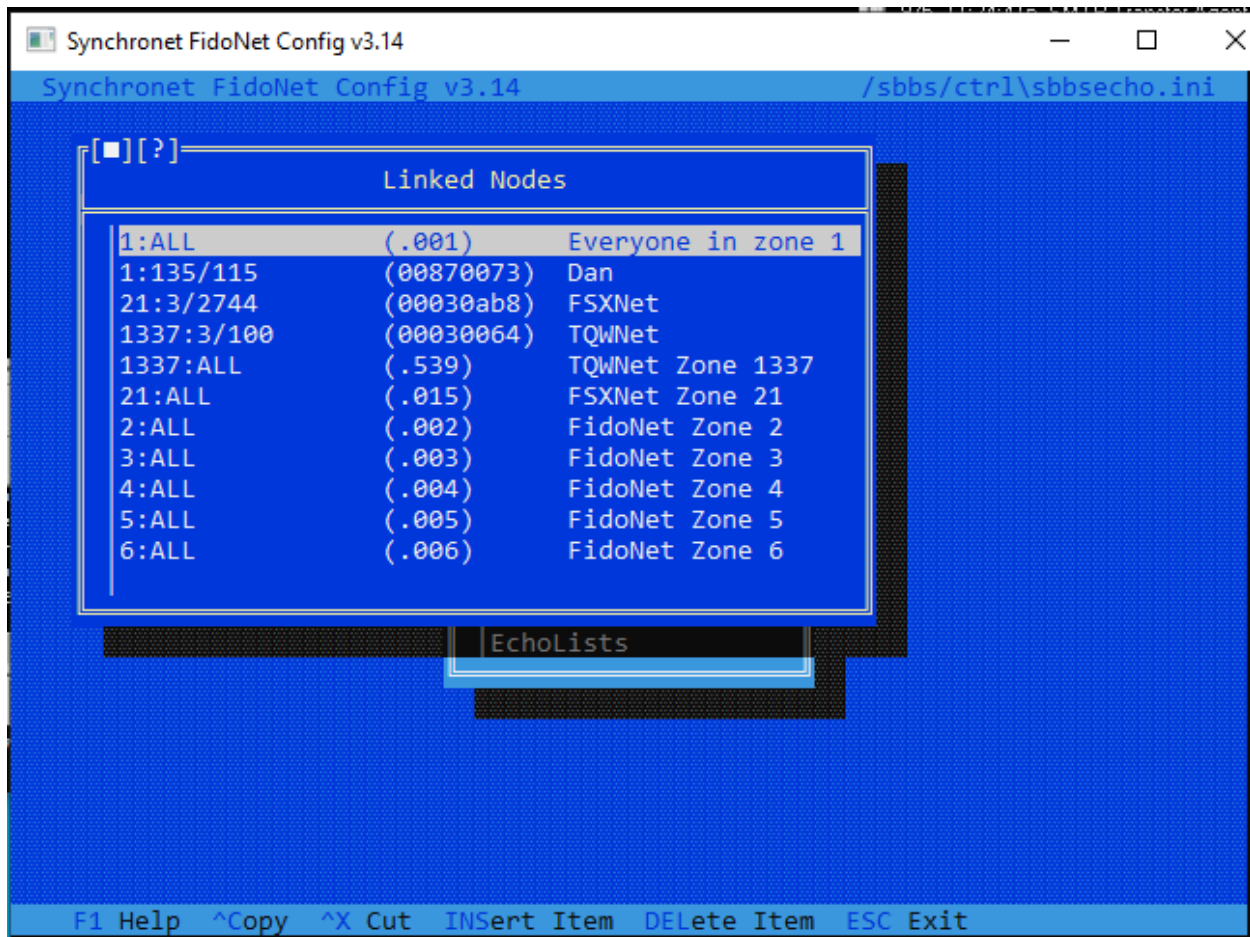


Click on "System Addresses:

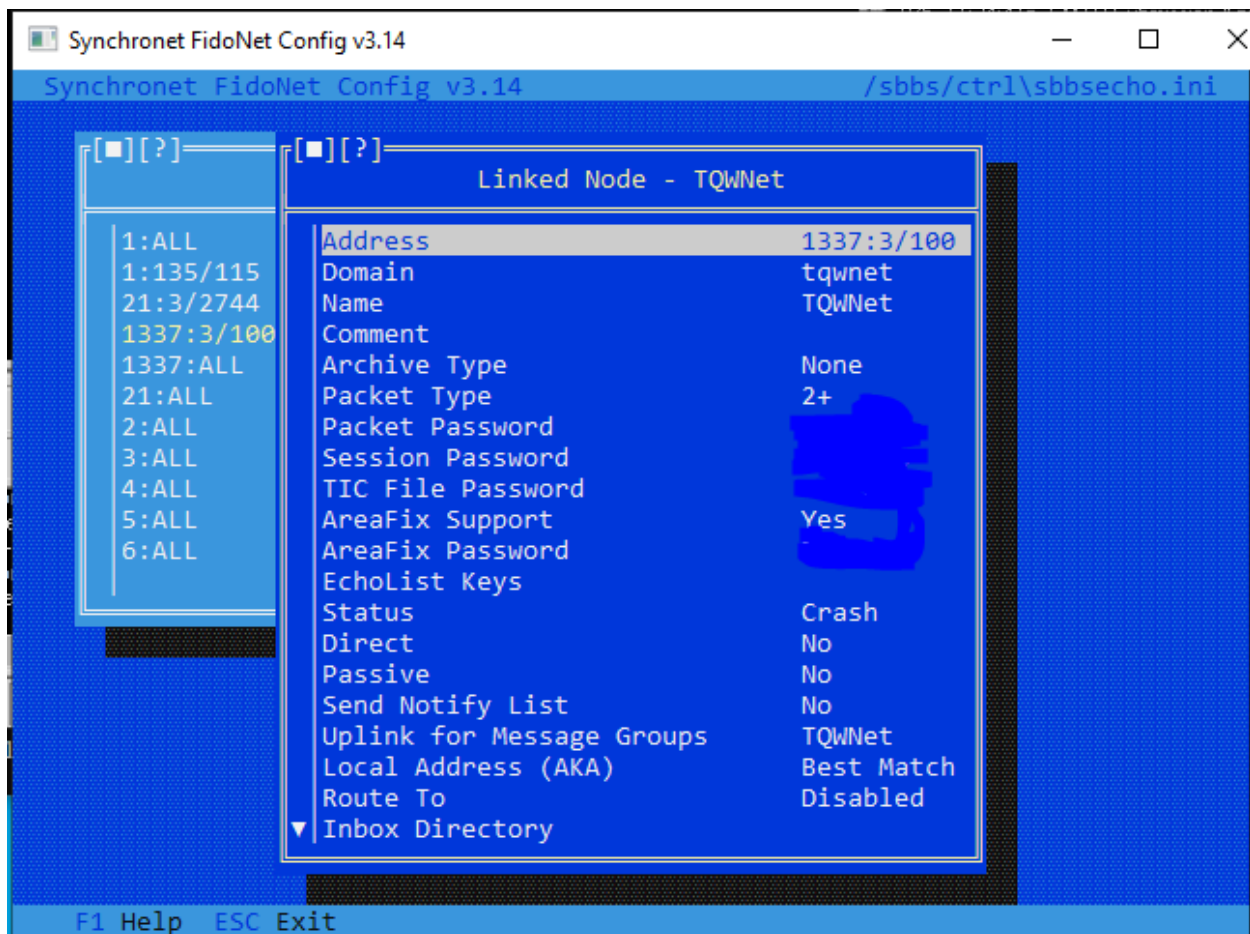


Under this area put the node address that you were given. Afterwards, exit this config area and make sure that you save your configuration settings. It should ask you before exiting.

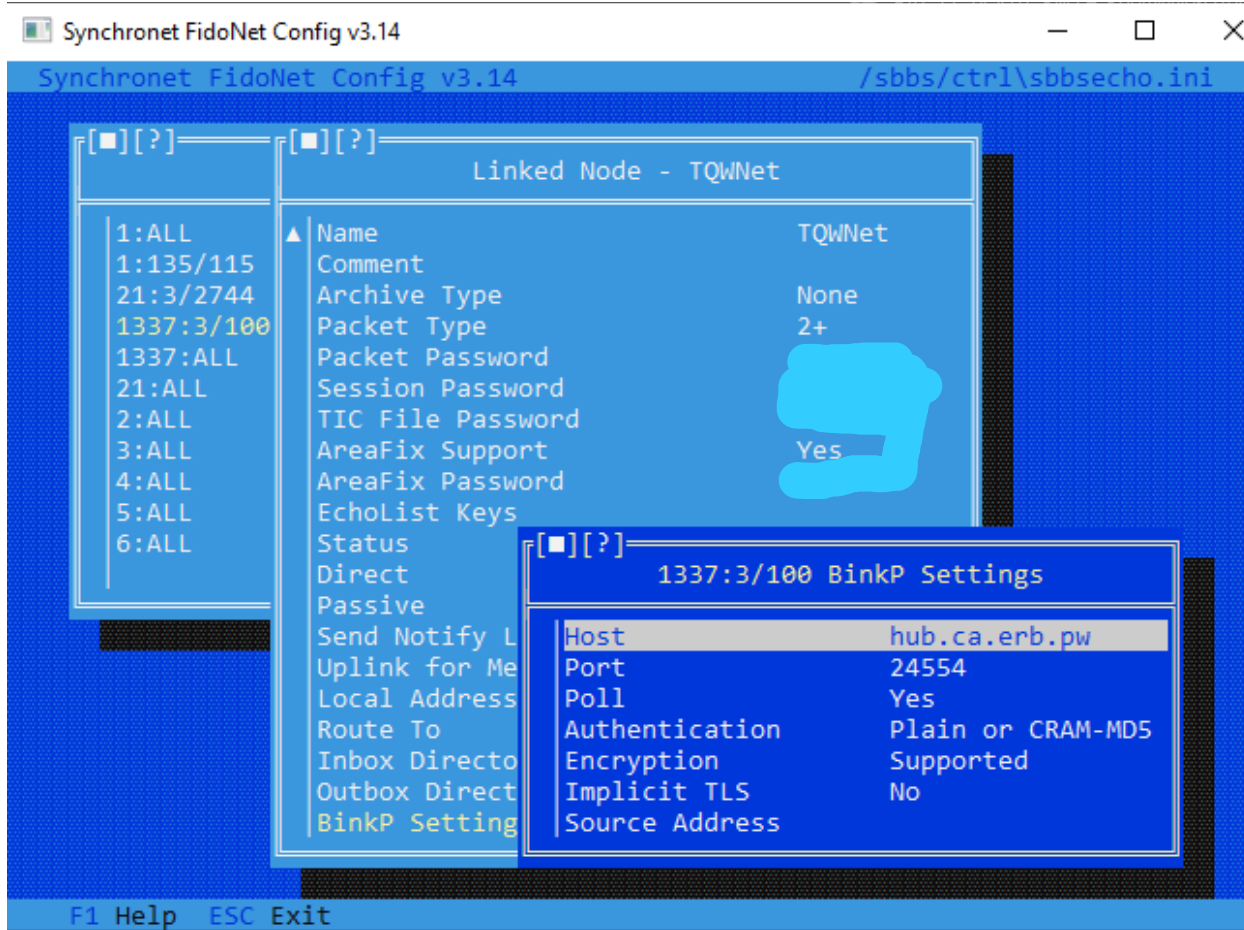
The next step is to go to the Echocfg area. From your SynchroNet Control Panel, click on "FidoNet" and the "Configure". Once Echocfg opens, click on "Linked nodes".



This is where you configure your Netmail and EchoMail. You must configure a setting for your hub and then for your zone. As you can see, I have this setup for FidoNet, FSXNet, and TQWNET. To configure these, move to the bottom empty area and hit enter which will add a new entry. First you can setup your TQWNet hub settings.

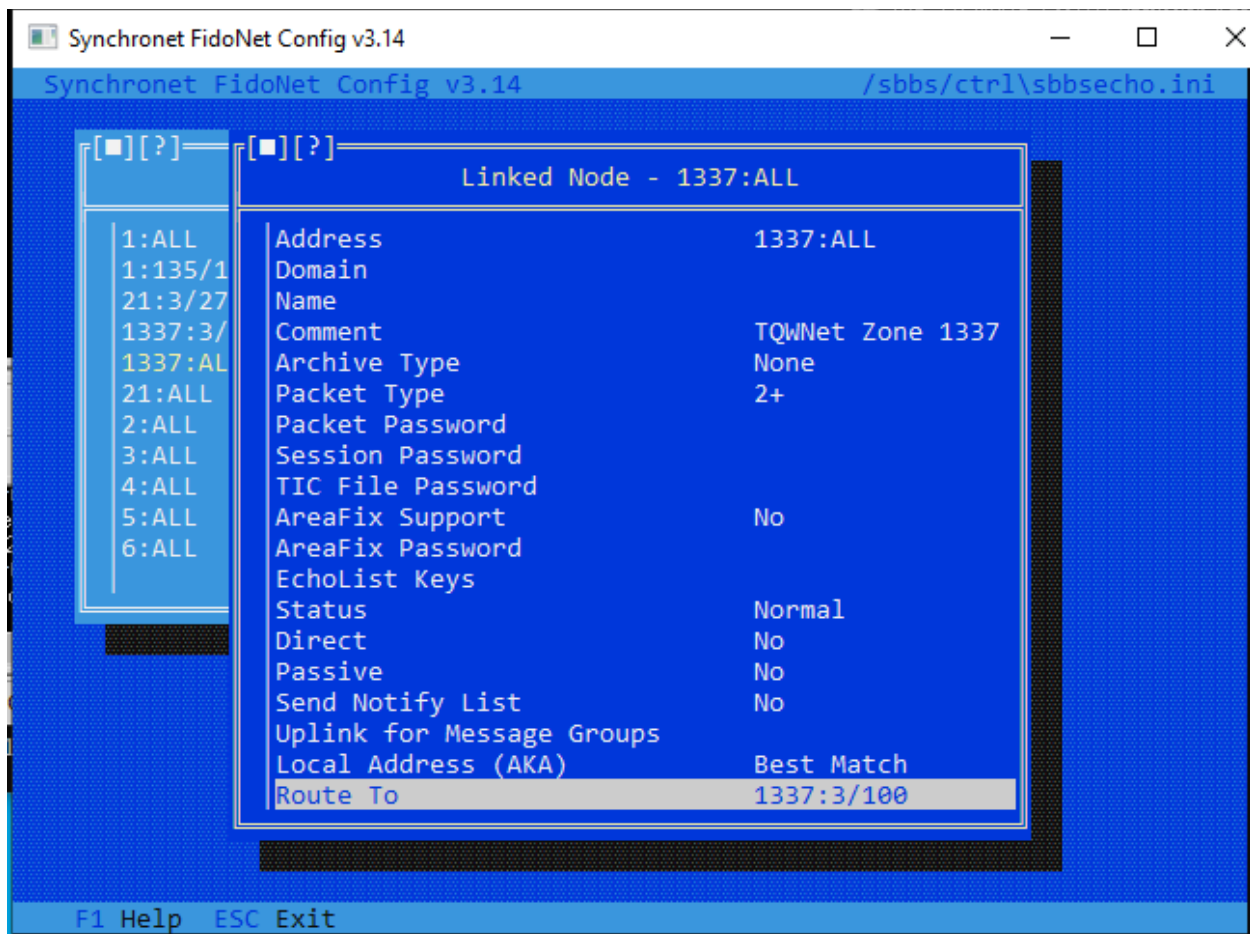


These settings should have been given to you in your email. Any that were not, are specific to setting up Synchronet. The passwords need to be correct (mine are blurred for privacy). Next, you need to scroll down to the BinkP settings.



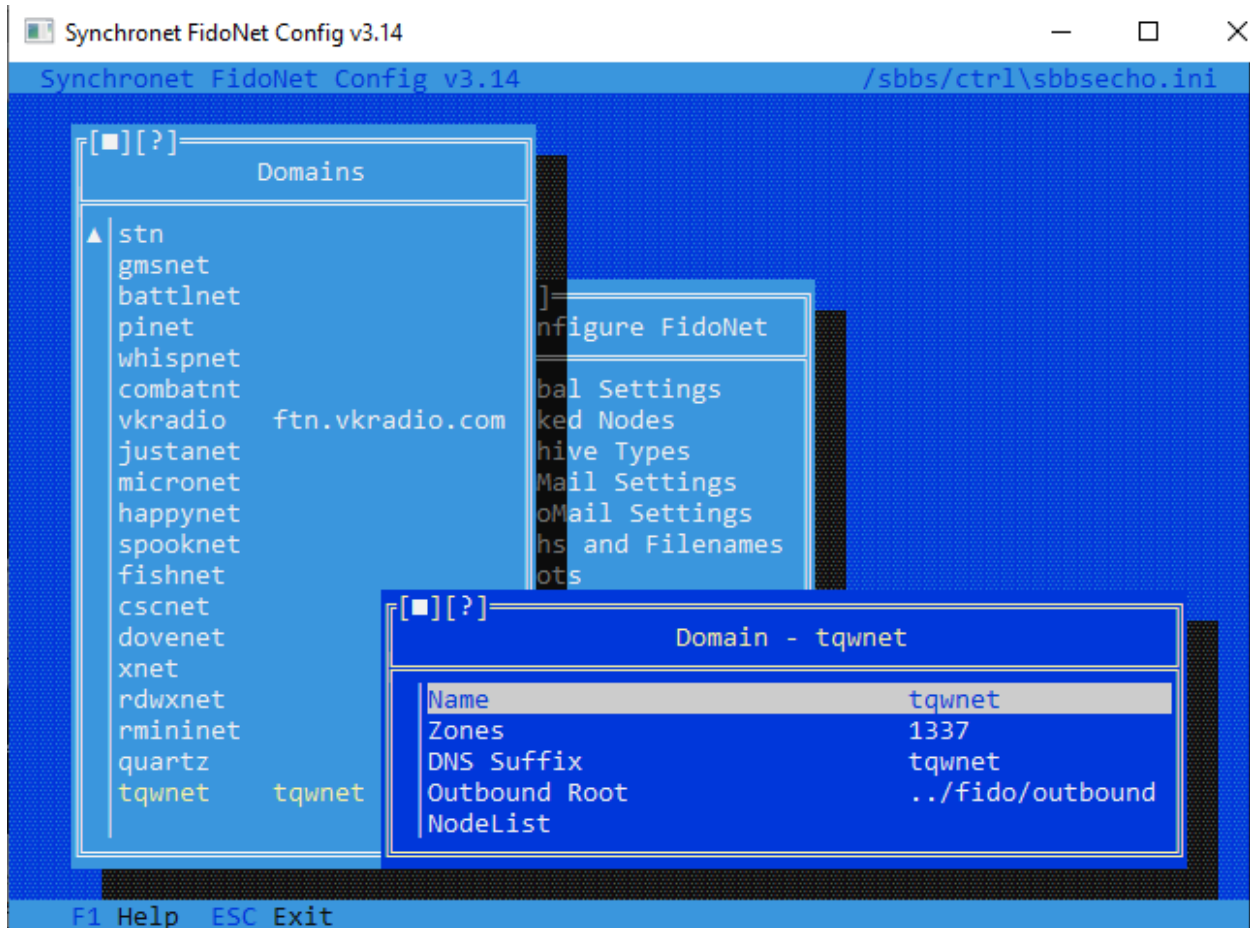
These settings may differ from mine, and you need to check the email from your welcome email. My host is in the USA and on port 24554. You may have a different Host and port. These must be correct for you to send messages. An important setting on the above picture is the "Poll" option. Make sure this is set to "Yes".

The next is to setup the zones. To do that hit "esc" 2 times to get back to the "Linked Nodes" option. From there go to the bottom where it is empty and hit enter to add a new entry.



The address needs to be set to "1337:ALL". This will ensure messages are routed through TQWNet. Emulate the options above. The most important setting is the "Route To" option. This tells Synchronet where to send messages for routing. This will usually be your hub.

After this step, hit "esc" 2 times to get the "Configure FidoNet" area. From there, goes down to "Domains" and go to the bottom empty option and hit "enter".



You will create a Domain called “TQWNet” and emulate these settings. The “Outbound Root” maybe differ depending on whether you are running on Windows or Linux. This is the Windows version. To find the “Outbound Root” on your particular installation, you can just look at the other domains listed and use that same setting.

From there, hit “esc” two times. You should see a setting at the bottom that asks to save your settings. Save your Echocfg settings.

The next step is to add the areas into your “areas.bbs” file. This file is located in the “data” directory within your Synchronet BBS installation. You will find the areas to add in the TQWNet download packet. It is in the “tqwnet.na” file. As of the time of writing, here are the available areas:

TQW_ADS	- BBS Adverts
TQW_DOCKER	- Docker Chat
TQW_BBSGEN	- General BBS Chat
TQW_GEN	- General Chat
TQW_GENSCI	- General Science News
TQW_GENTECH	- General Tech News
TQW_LINUX	- Linux
TQW_MACOSX	- Mac OS X
TQW_MBSE	- MBSE BBS Chat
TQW_MYS	- Mystic BBS Chat
TQW_MDEV	- Mystic BBS Development
TQW_PYTHON	- Python General Chat

TQW\_RASBPPI - Raspberry Pi  
TQW\_BOT - roBOT output  
TQW\_SUG - Suggestions Box  
TQW\_SYNCHRO - Synchronet BBS Chat  
TQW\_TEST - Test Echo

Please check the "tqwnet.na" file for the most up to date list. You will need to add these areas to the "areas.bbs" file mentioned above.

```
tqw_ads      TQW_ADS      1337:3/100
tqw_docker   TQW_DOCKER   1337:3/100
tqw_bbsgen   TQW_BBSGEN   1337:3/100
tqw_gen      TQW_GEN      1337:3/100
tqw_gensci   TQW_GENSCI   1337:3/100
tqw_gentech  TQW_GENTECH  1337:3/100
tqw_linux    TQW_LINUX    1337:3/100
tqw_macosx   TQW_MACOSX   1337:3/100
tqw_mbse     TQW_MBSE     1337:3/100
tqw_mys      TQW_MYS      1337:3/100
tqw_mdev     TQW_MDEV     1337:3/100
tqw_python   TQW_PYTHON   1337:3/100
tqw_rasbpi   TQW_RASBPI   1337:3/100
tqw_bot      TQW_BOT      1337:3/100
tqw_sug      TQW_SUG      1337:3/100
tqw_synchro  TQW_SYNCHRO  1337:3/100
tqw_test     TQW_TEST     1337:3/100
tqw_rasbpbi  TQW_RASBPPI 1337:3/100
```

Ln 248, Col 54

100%

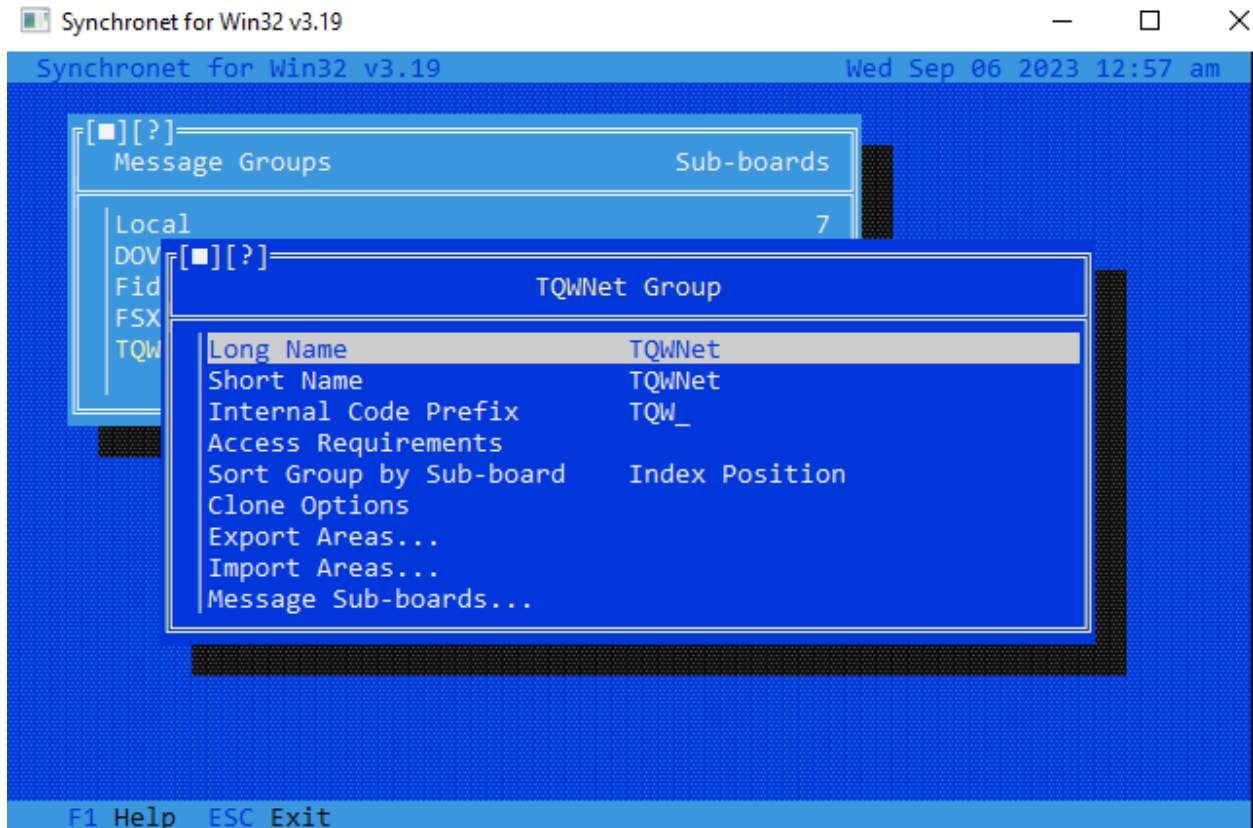
Windows (CRLF)

UTF-8

This file helps route the messages to your message areas that we will setup next. I kept all the names the same for simplicity. The hub must also be present on each line as well. Make sure you use the hub that is given to you as it may differ from mine. This file may also contain FidoNet, FSXNet and other network message areas. I only included the screenshot of TQWNet. After adding these entries, save the "areas.bbs" file.

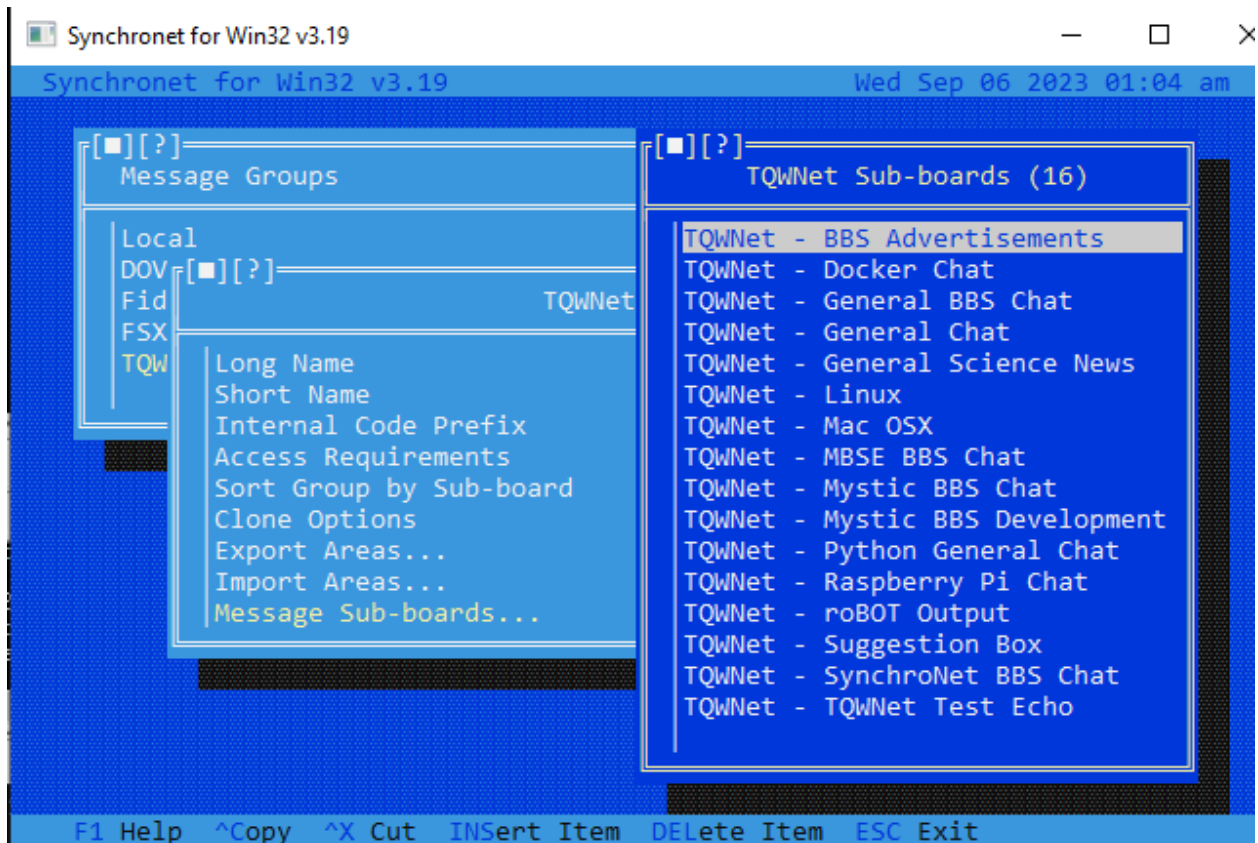
Next, the message areas need to be setup. To do this, you must go back to the "SynchroNet Control Panel" and click on "BBS" and then "Configure". From there, go down to "Message Areas". Go to the blank option at the bottom and hit enter.



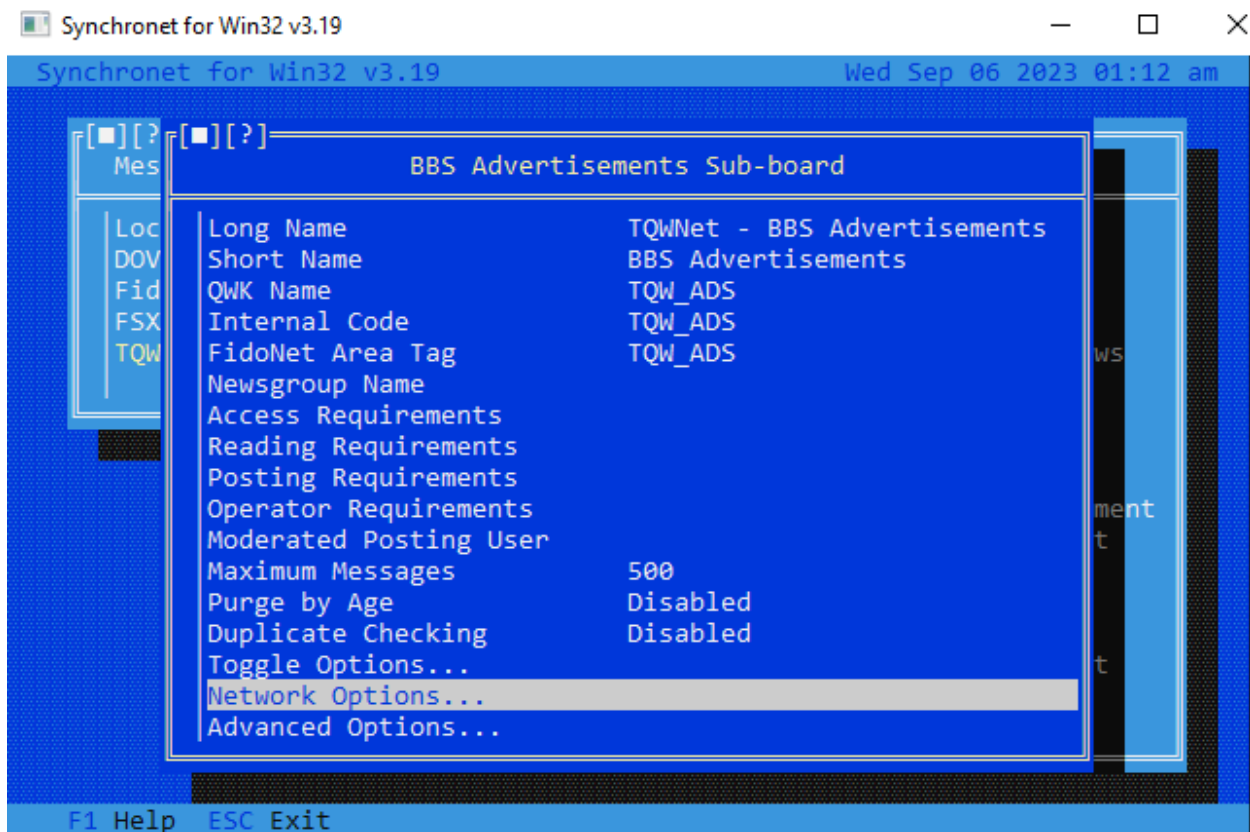


You will be asked for the first 3 options in creating the group. Just type in the answers from the above picture. Once that is complete. Click on the "TQWNet" option under "Message Groups" and you will see the above picture. Make sure your settings are the same as above. If not, change them to match the above picture.

From here, click on "Message Sub-Boards". This is where you make your public message areas.

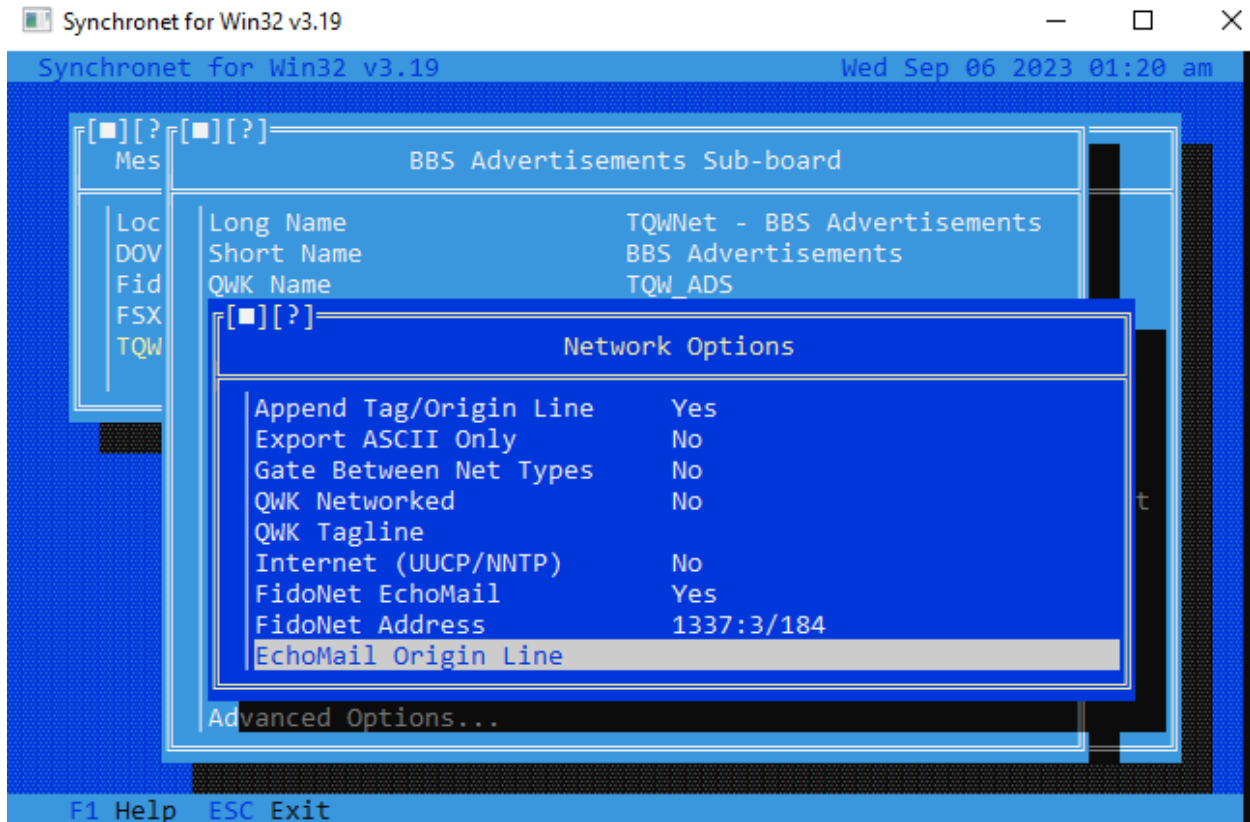


You will need to create the list above manually. To create a new "Sub-Board", go to a blank area and hit enter. You will be asked for a "Long Name". These are the names that you see. After, you can put a short name in. I used the same name without the "TQWNet" in the title. Then, you will be asked for an "Internal Code Suffix". I just hit enter and change it after.



You need to refer to the most up to date "tqwnet.na" file and your "areas.bbs" file and match the "QWK Name", "Internal Code" and "FidoNet Area Tag" and create this for each TQWNet message group you want on your BBS. On the above example, the "TQW\_ADS" will route all external messages to your "TQWNet - BBS Advertisements" sub-group. You will need to add one of these "Sub-Boards" for each areas in your "areas.bbs" file.

In each "Sub-Board" you need to go into "Network Options".



Here is an example of the needed settings. The important setting is the "FidoNet Address" Option. You need to choose your TQWNet node. This will help Synchronet to know what network to use with this sub-board".

You will need to do an Areafix to your hub. This would be done from within the BBS Sysop login. Go into "Email" (option E) and then "Send Netmail" (Option N). The network name to send the netmail would be your hub. For example, I would send an AreaFix to "areafix@1337:3/100". The subject must have your areafix password that was given to you in your email. To subscribe to all areas, just put "%ALL" in the body of the email. You then hit "Control-Z" to send the areafix email.

```
Subj: PASSWORD
To : areafix
From: Dave Weissinger
-----
%ALL

FSEditor v1.104 - Type CTRL-K for help      Insert Mode      Current Colour
Port of Call Synchro | Telnet | Connected: 01:44:08 | OPT-2 for menu
```

I hope this helps you get setup with TQWNet. I tried to make this guide easy for anyone to understand. There may be easier ways to accomplish the above tasks, but these were the steps I took. I would also not have been successful without the great help from the community. They were always extremely helpful.